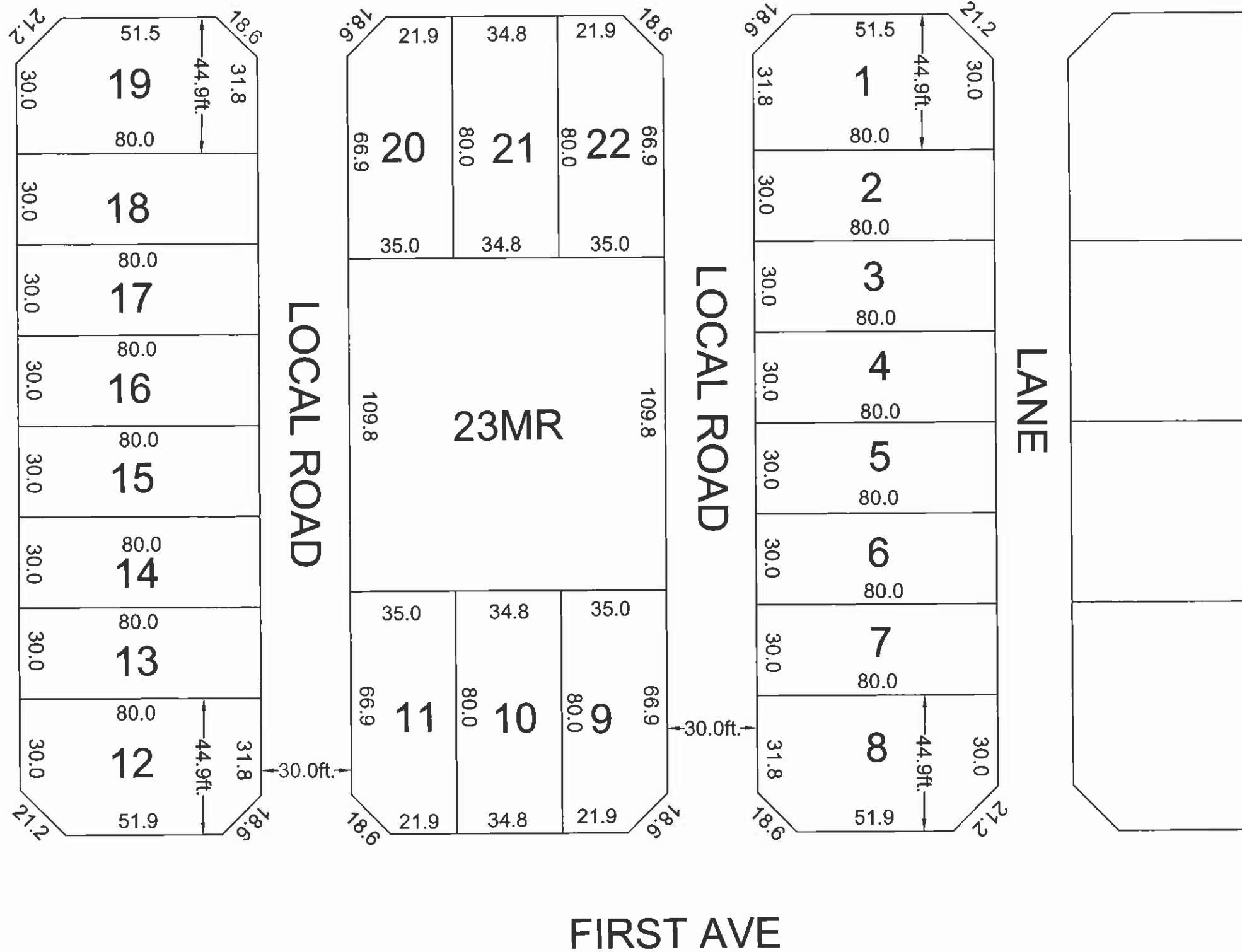


# Village of Big Valley

## PROPOSED TINY HOUSE RESIDENTIAL DISTRICT SUBDIVISION

FOURTH ST SOUTH



LOT	WIDTH	DEPTH	AREA
1	44.9ft	80.0ft	3398.9ft <sup>2</sup>
2	30.0ft	80.0ft	2400.1ft <sup>2</sup>
3	30.0ft	80.0ft	2400.1ft <sup>2</sup>
4	30.0ft	80.0ft	2400.1ft <sup>2</sup>
5	30.0ft	80.0ft	2400.1ft <sup>2</sup>
6	30.0ft	80.0ft	2400.1ft <sup>2</sup>
7	30.0ft	80.0ft	2400.1ft <sup>2</sup>
8	44.9ft	80.0ft	3398.9ft <sup>2</sup>
9	35.0ft	80.0ft	2715.7ft <sup>2</sup>
10	34.8ft	80.0ft	2788.0ft <sup>2</sup>
11	35.0ft	80.0ft	2715.7ft <sup>2</sup>
12	44.9ft	80.0ft	3398.9ft <sup>2</sup>
13	30.0ft	80.0ft	2400.1ft <sup>2</sup>
14	30.0ft	80.0ft	2400.1ft <sup>2</sup>
15	30.0ft	80.0ft	2400.1ft <sup>2</sup>
16	30.0ft	80.0ft	2400.1ft <sup>2</sup>
17	30.0ft	80.0ft	2400.1ft <sup>2</sup>
18	30.0ft	80.0ft	2400.1ft <sup>2</sup>
19	44.9ft	80.0ft	3398.9ft <sup>2</sup>
20	35.0ft	80.0ft	2715.7ft <sup>2</sup>
21	34.8ft	80.0ft	2788.0ft <sup>2</sup>
22	35.0ft	80.0ft	2715.7ft <sup>2</sup>
23MR	109.8ft	104.8ft	11525.8ft <sup>2</sup>

\* All dimensions shown are imperial





Block 23; Lots 9; 16; 24; 31 are \$46,000 + GST

Block 23; Lots 17 – 19 and 21 – 23 are \$44,000 + GST

Block 23; Lots 10 – 15 and 25 – 30 are \$43,000 + GST

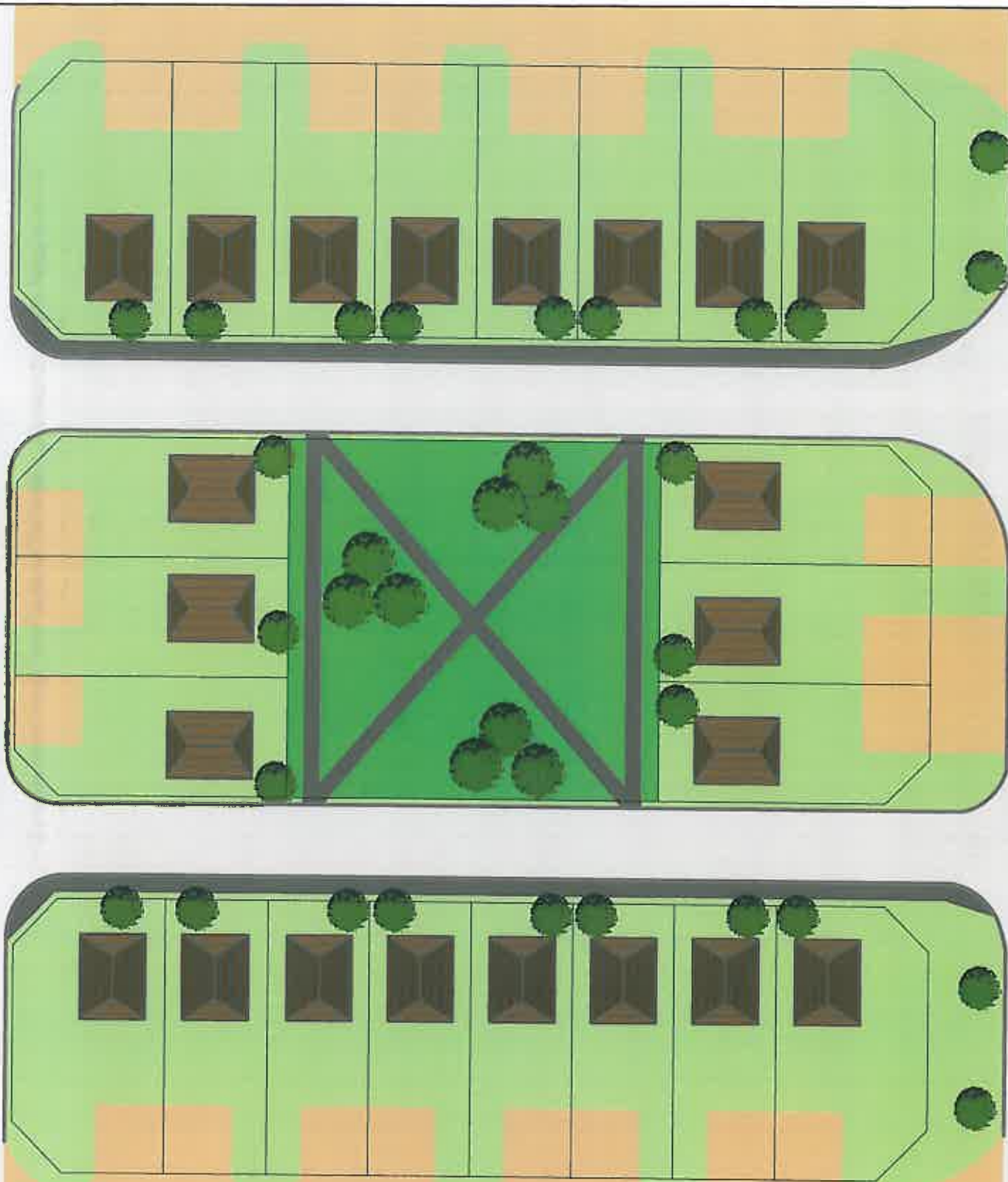
# VILLAGE OF BIG VALLEY



Date Saved:  
Jan. 26, 2017

Second Avenue

First Avenue



0 5 10 20 30 40 50 Meters